

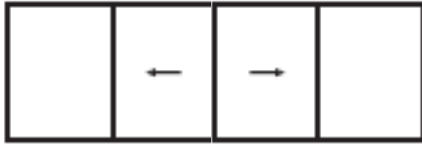
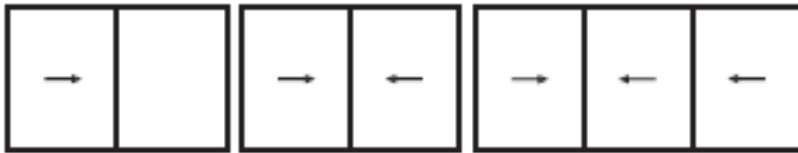


ALU 4700 Sliding Door

The ALU 4700 sliding door combines minimalist style with reliability, delivering optimum performance. The slimline interlock of just 47mm, maximises the glazing area - allowing light to flood in.

- 47mm wide interlock profile
- Glass thicknesses of up to 34mm
- Thermal Performance down to 1.5 w/m²K
- This system can be used in both door and window applications
- Available in 2 or 3 sashes with double and triple track variations
- Fixed Sash or Sliding Sash option
- Thermally broken aluminium profiles
- Stainless Steel Rails allowing for ultra smooth sliding

Opening Possibilities



Technical Data

U Values

U Glass (W/m ² K)	0.9	1	1.1	1.2
U Overall (W/m ² K)	1.5	1.6	1.7	1.7

Weather Ratings

Wind Resistance: BS EN 12210:2000 Class C5

Water Tightness: BS EN 12208:2000 Class 7A

Air Permeability: BS EN 12207:2000 Class 3

Acoustic Insulations

- Maximum glazing 34mm
- Maximum acoustic insulation $R_w=40$ dBA

Size Limitations Per Sash

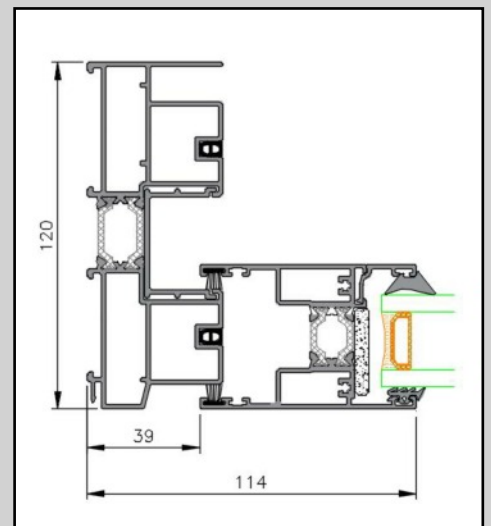
Max Width: 2500mm

Max Height: 3000mm

Max Weight: 280Kg



2 Track Jamb Section



Meeting Stile/Interlock Section

