

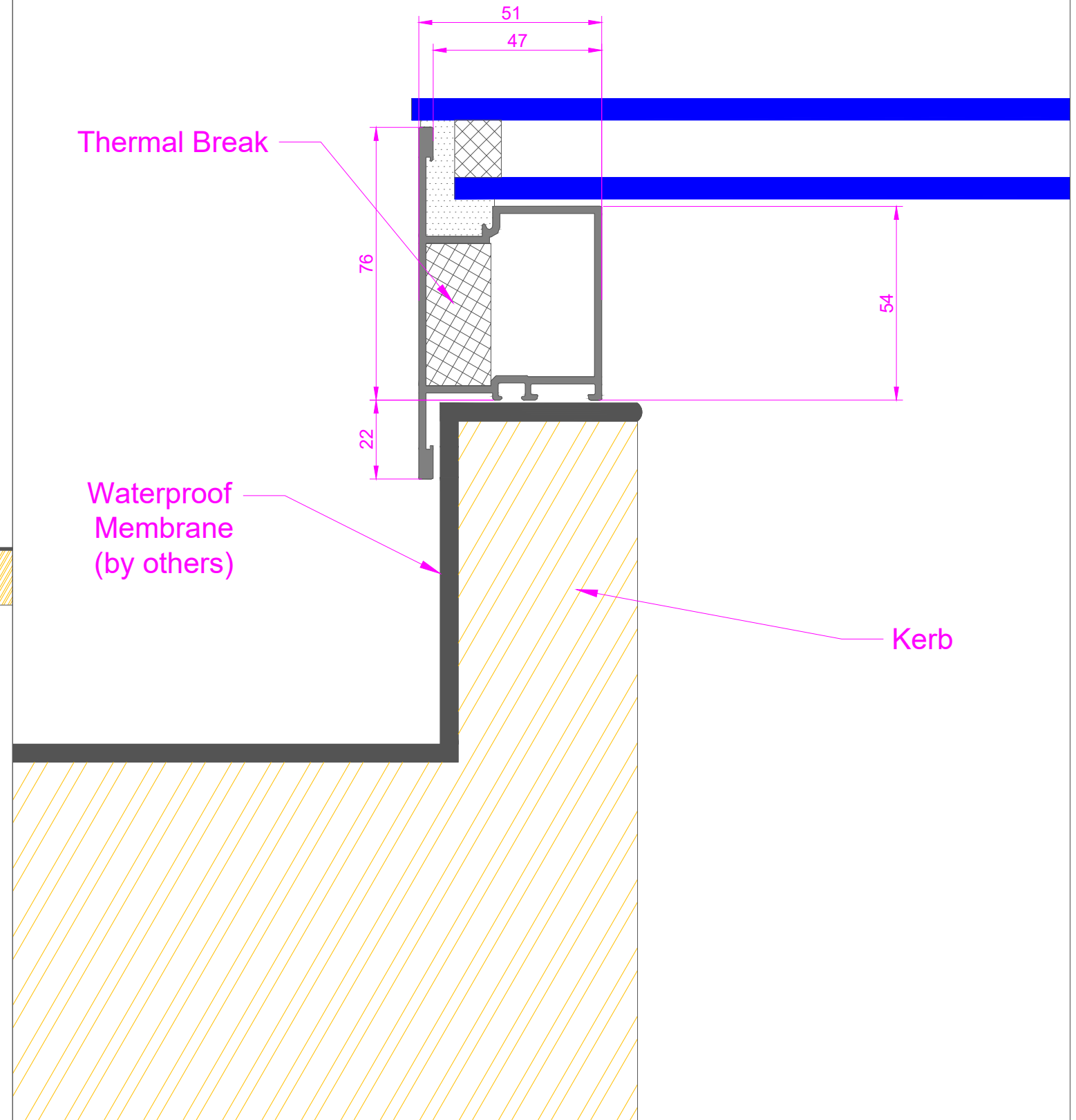
Alumen Aether Range



Customer to Specify External Kerb Size Dimensions

Fitting Instructions

1. Ensure that the timber kerb is tall enough and that the waterproof membrane is at least level with the top of the kerb.
2. Put down a heavy bed of silicone on top where Rooflight will sit.
3. Place Rooflight down on the bed of silicone.
4. Once you are happy with the position of the Rooflight, screw it down. There are screws provided which locate into the pre drilled holes. Before putting in the screws, dip them into silicone so they seal.



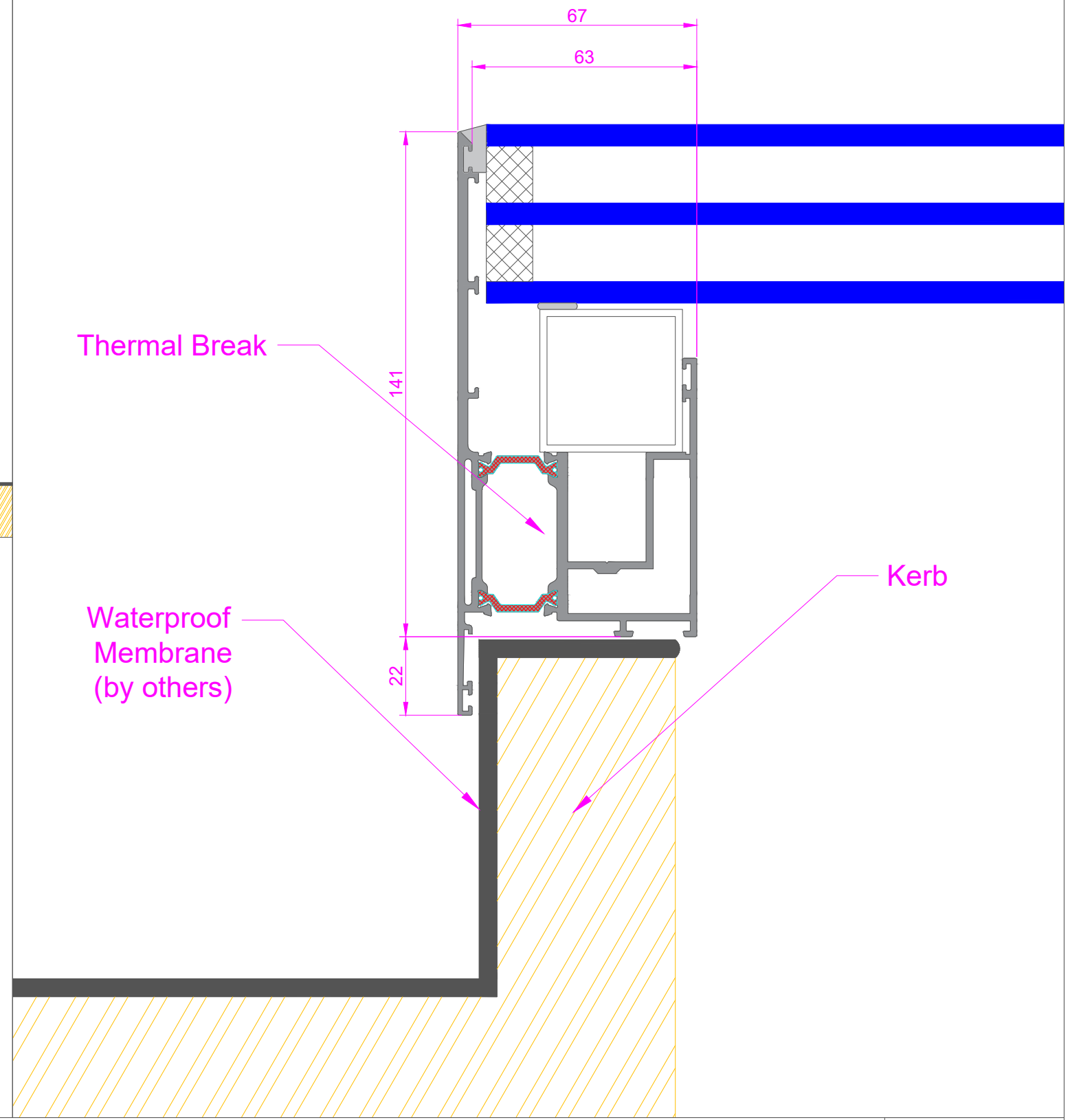
Alumen Aether Range - Triple



Customer to Specify External Kerb Size Dimensions

Fitting Instructions

1. Ensure that the timber kerb is tall enough and that the waterproof membrane is at least level with the top of the kerb.
2. Put down a heavy bed of silicone on top where Rooflight will sit.
3. Place Rooflight down on the bed of silicone.
4. Once you are happy with the position of the Rooflight, screw it down. There are screws provided which locate into the pre drilled holes. Before putting in the screws, dip them into silicone so they seal.

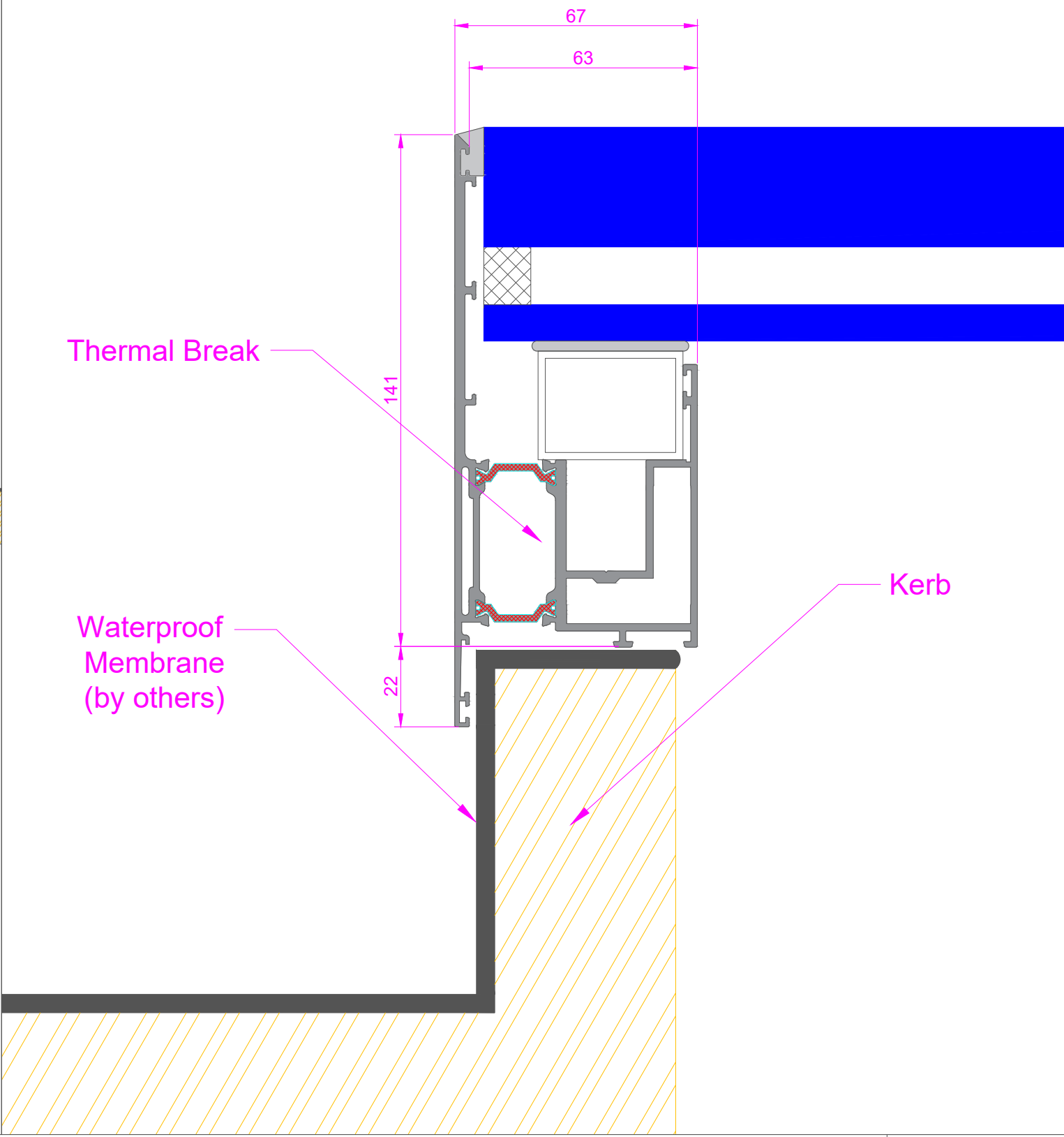


Alumen Aether Range - Walkover



Fitting Instructions

1. Ensure that the timber kerb is tall enough and that the waterproof membrane is at least level with the top of the kerb.
2. Put down a heavy bed of silicone on top where Rooflight will sit.
3. Place Rooflight down on the bed of silicone.
4. Once you are happy with the position of the Rooflight, screw it down. There are screws provided which locate into the pre drilled holes. Before putting in the screws, dip them into silicone so they seal.

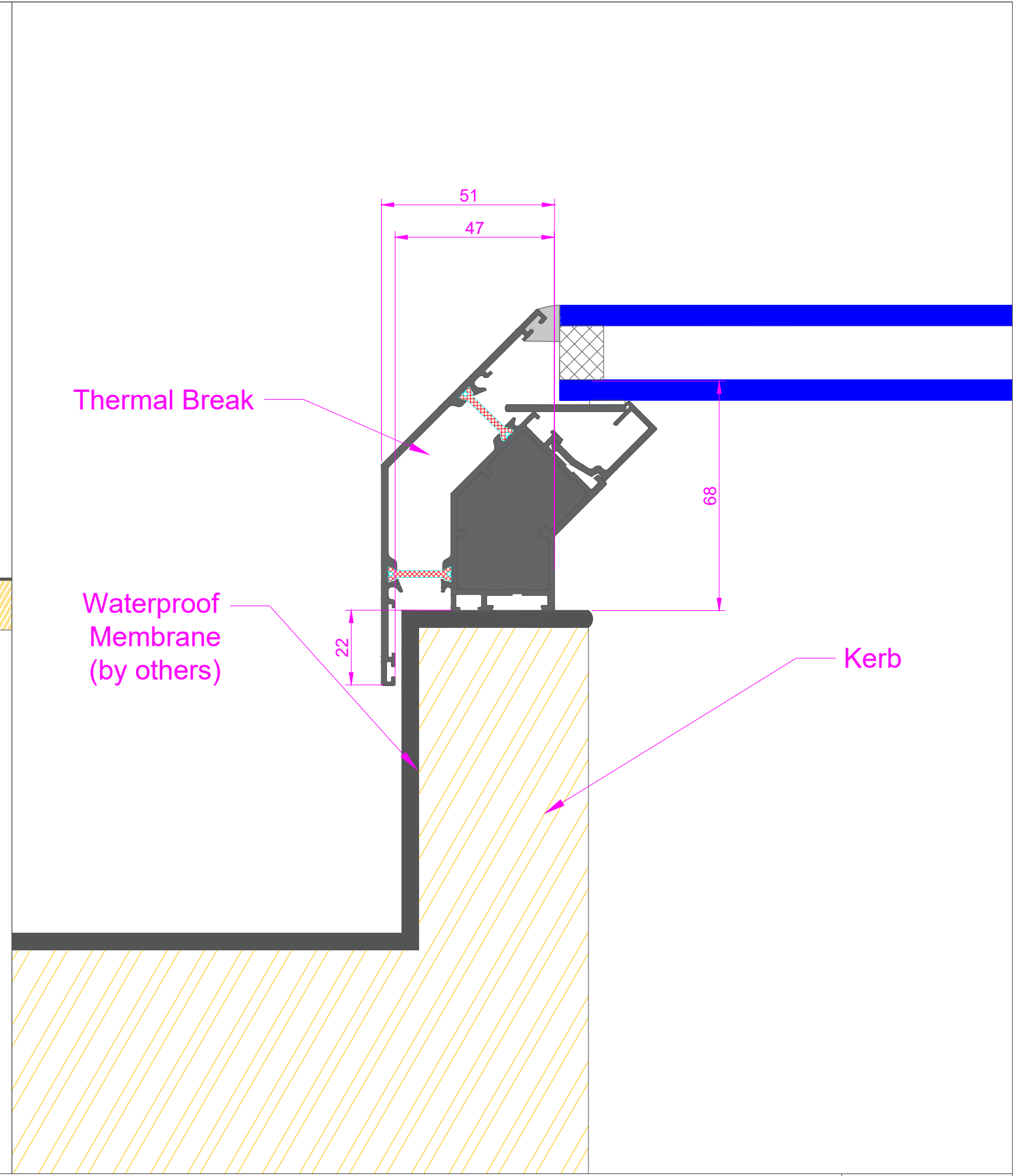


Alumen Helios Range



Fitting Instructions

1. Ensure that the timber kerb is tall enough and that the waterproof membrane is at least level with the top of the kerb.
2. Put down a heavy bed of silicone on top where Rooflight will sit.
3. Place Rooflight down on the bed of silicone.
4. Once you are happy with the position of the Rooflight, screw it down. There are screws provided which locate into the pre drilled holes. Before putting in the screws, dip them into silicone so they seal.

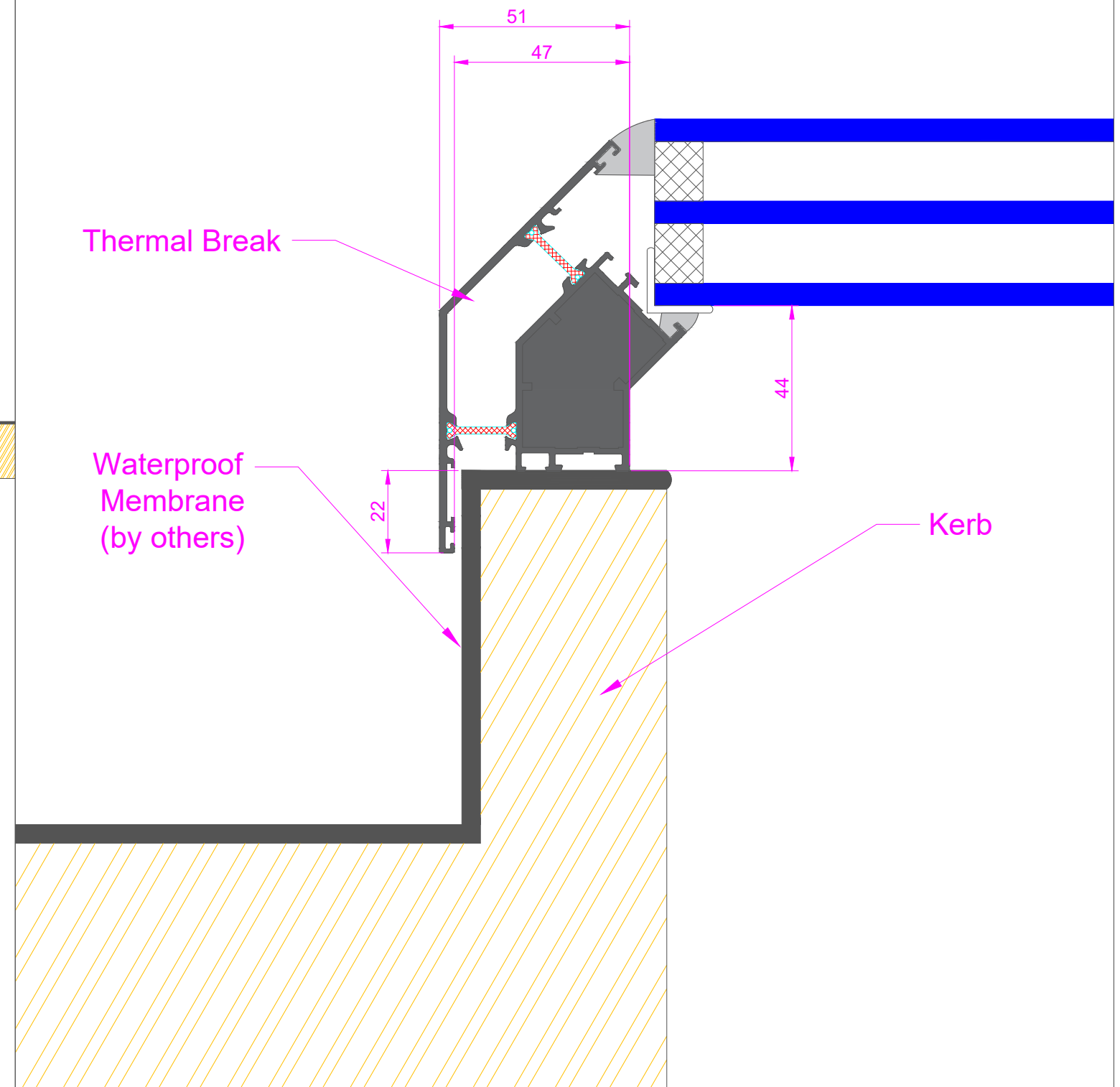


Alumen Helios Range - Triple



Fitting Instructions

1. Ensure that the timber kerb is tall enough and that the waterproof membrane is at least level with the top of the kerb.
2. Put down a heavy bed of silicone on top where Rooflight will sit.
3. Place Rooflight down on the bed of silicone.
4. Once you are happy with the position of the Rooflight, screw it down. There are screws provided which locate into the pre drilled holes. Before putting in the screws, dip them into silicone so they seal.



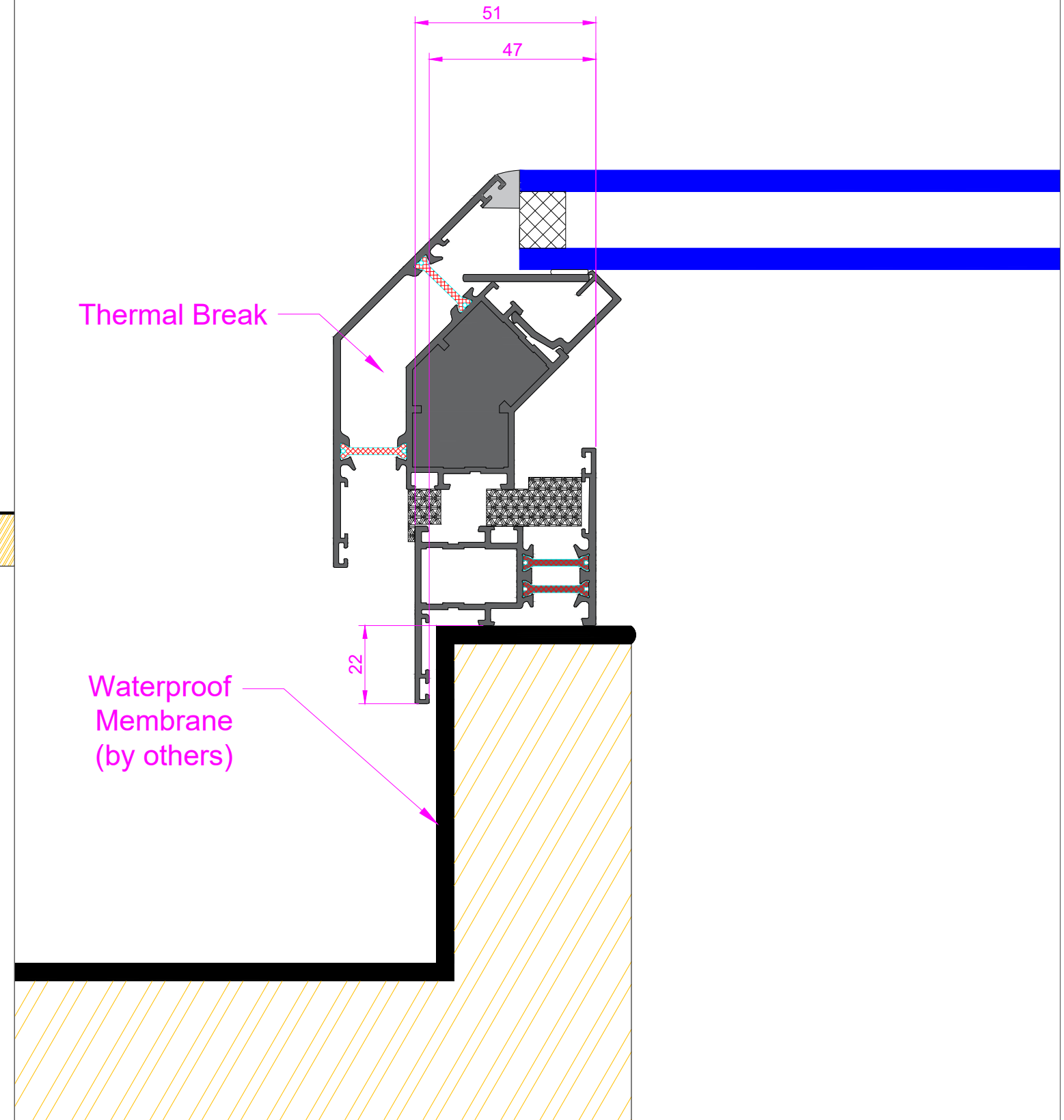
Alumen Helios Opening (Electric and Plus)



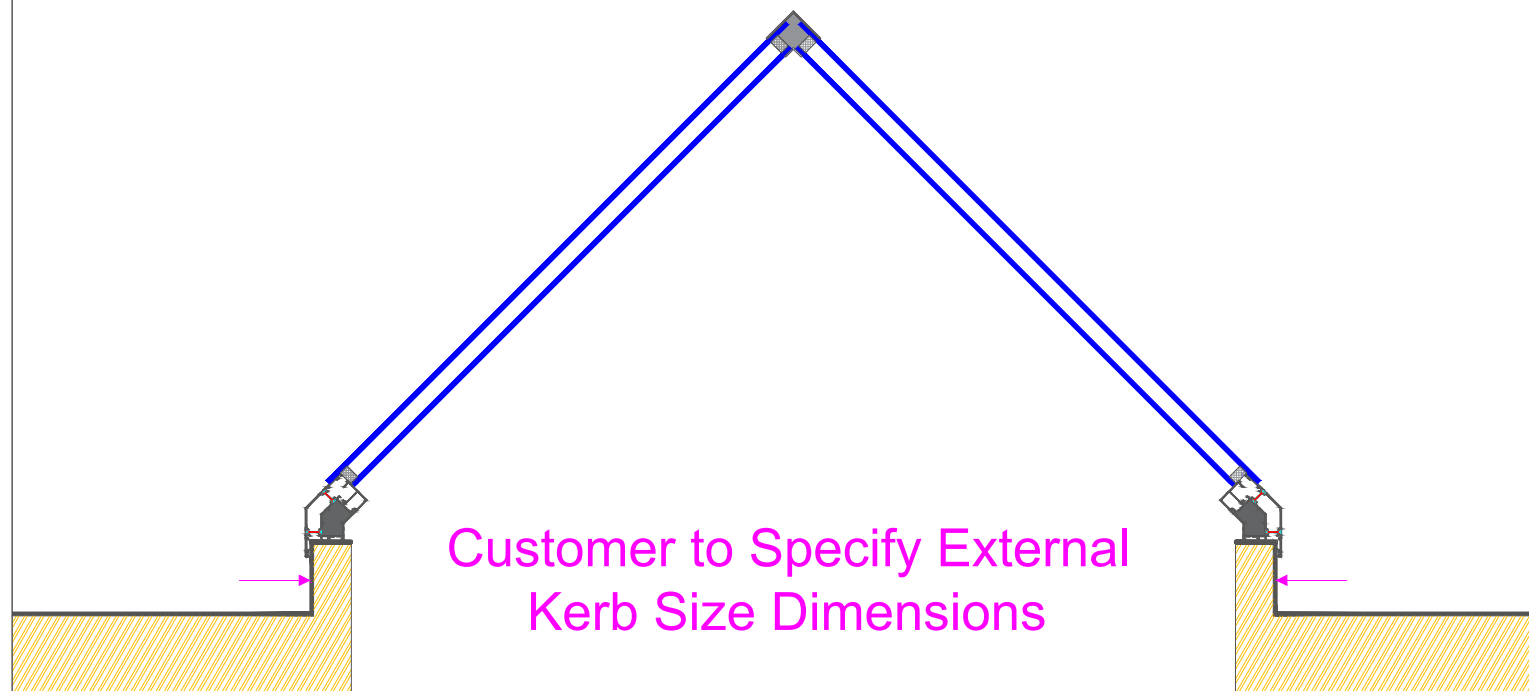
Customer to Specify External Kerb Size Dimensions

Fitting Instructions

1. Ensure that the timber kerb is tall enough and that the waterproof membrane is at least level with the top of the kerb.
2. Put down a heavy bed of silicone on top where Rooflight will sit.
3. Place Rooflight down on the bed of silicone.
4. Once you are happy with the position of the Rooflight, screw it down. There are screws provided which locate into the pre drilled holes. Before putting in the screws, dip them into silicone so they seal.



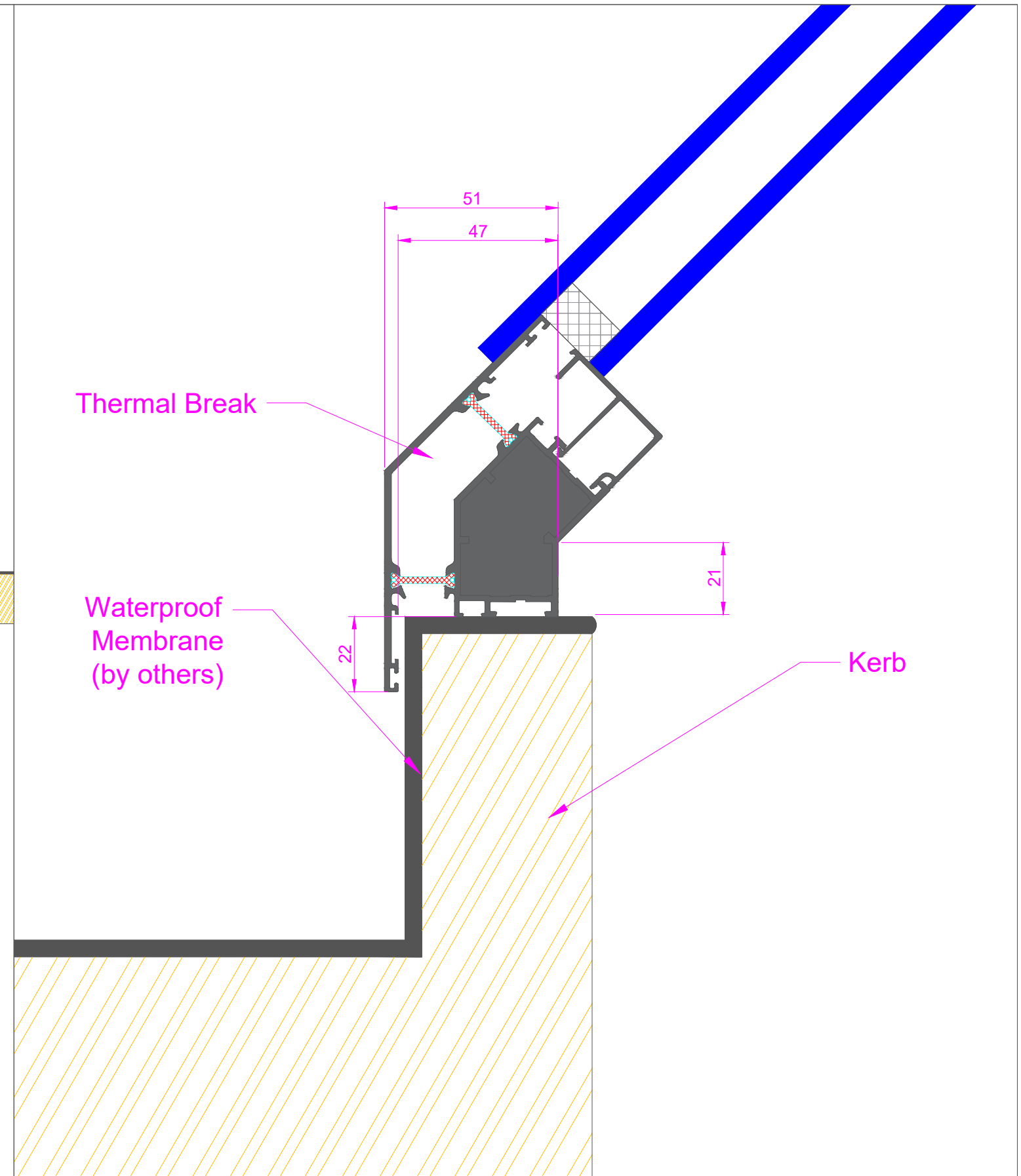
Alumen Olympus Range



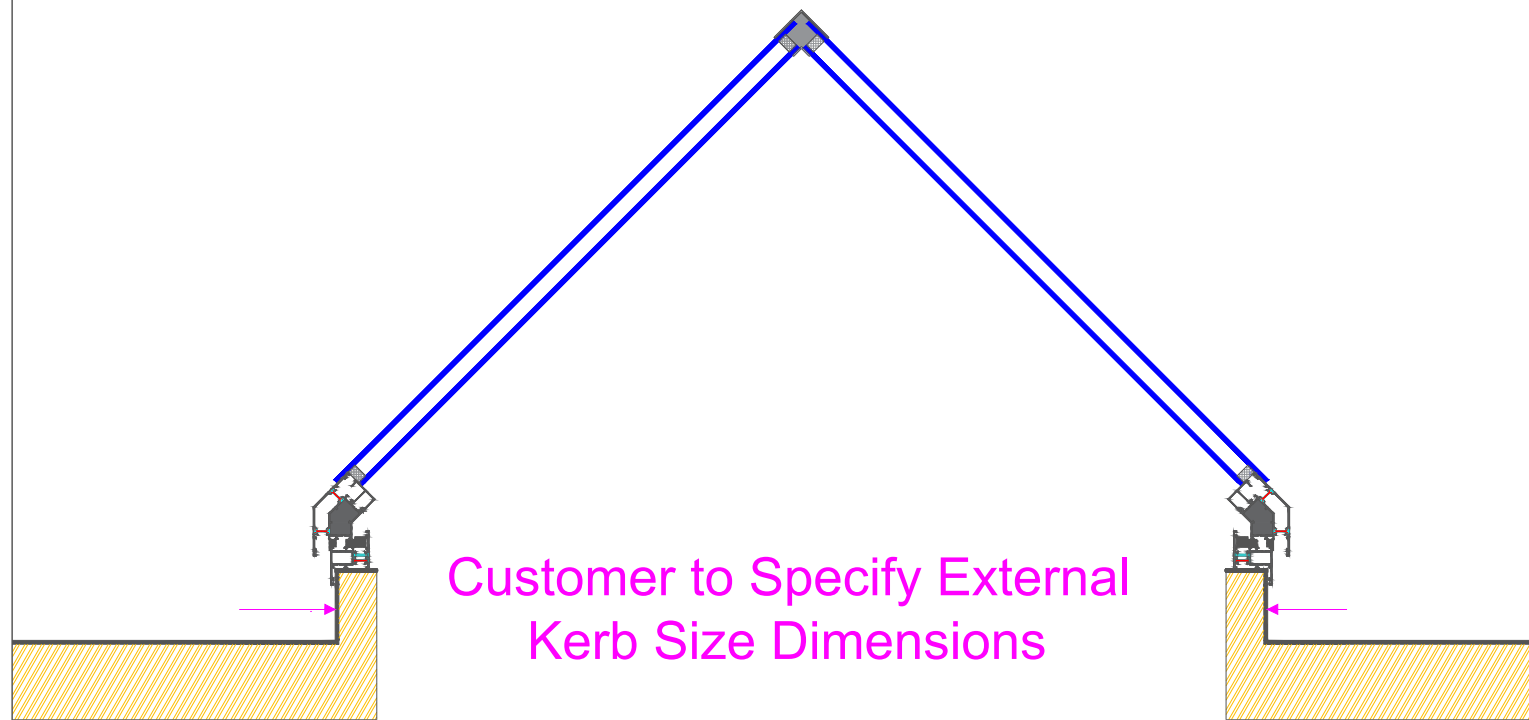
Customer to Specify External Kerb Size Dimensions

Fitting Instructions

1. Ensure that the timber kerb is tall enough and that the waterproof membrane is at least level with the top of the kerb.
2. Put down a heavy bed of silicone on top where Rooflight will sit.
3. Place Rooflight down on the bed of silicone.
4. Once you are happy with the position of the Rooflight, screw it down. There are screws provided which locate into the pre drilled holes. Before putting in the screws, dip them into silicone so they seal.



Alumen Olympus Opening (Electric and Plus)



Customer to Specify External
Kerb Size Dimensions

Fitting Instructions

1. Ensure that the timber kerb is tall enough and that the waterproof membrane is at least level with the top of the kerb.
2. Put down a heavy bed of silicone on top where Rooflight will sit.
3. Place Rooflight down on the bed of silicone.
4. Once you are happy with the position of the Rooflight, screw it down. There are screws provided which locate into the pre drilled holes. Before putting in the screws, dip them into silicone so they seal.

