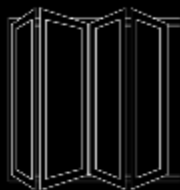


# Rooflights

Installation Booklet

A step by step walk through on how to install your rooflight.

Aether - Helios - Olympus



**ALUMEN**

ARCHITECTURAL ALUMINIUM

## Other Products by Alumen

Alumen specialise in the fabrication and installation of aluminium windows and doors, including bifolding doors, contemporary residential doors, sliding doors and commercial doors. We also fabricate and install shop fronts, windows, conservatories and roofs, including the full range of SMART and Schuco products.



To see some of the other products we manufacture request a brochure, visit our website or come to our showroom in Kettering, Northants for a free consultation.

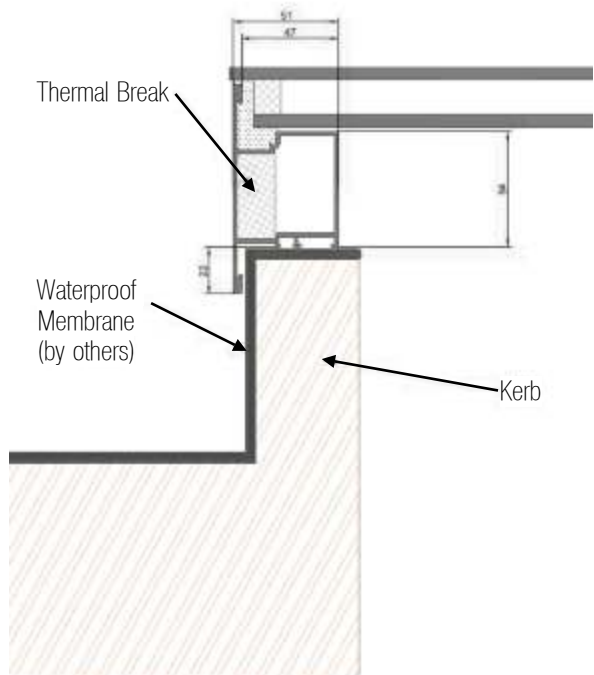
# Alumen Aether Range



Measure the rooflight to the outside edge of the kerb. Ensure you take into consideration the thickness of the waterproof membrane in any measurement.

## Fitting Instructions

1. Ensure that the timber kerb is tall enough (at least 150 mm above level of roof) and that the waterproof membrane is at least level with the top of the kerb.
2. Put down a heavy bed of silicone on top of the kerb where the rooflight will sit.
3. Place the rooflight down on the bed of silicone.
4. Once you are happy with the position of the rooflight, fit it in place with the screws provided. The screws locate into the pre drilled holes. Before putting in the screws, dip them into silicone so they seal.



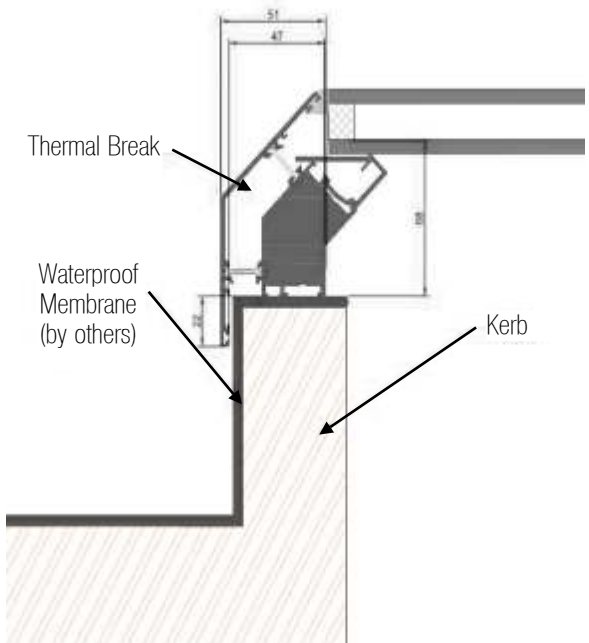
# Alumen Helios Range



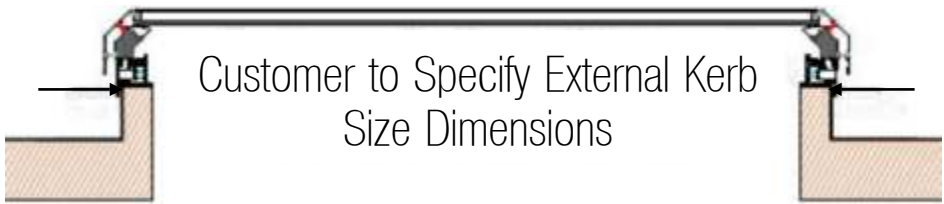
Measure the rooflight to the outside edge of the kerb. Ensure you take into consideration the thickness of the waterproof membrane in any measurement.

## Fitting Instructions

1. Ensure that the timber kerb is tall enough (at least 150 mm above level of roof) and that the waterproof membrane is at least level with the top of the kerb.
2. Put down a heavy bed of silicone on top of the kerb where the rooflight will sit.
3. Place the rooflight down on the bed of silicone.
4. Once you are happy with the position of the rooflight, fit it in place with the screws provided. The screws locate into the pre drilled holes. Before putting in the screws, dip them into silicone so they seal.



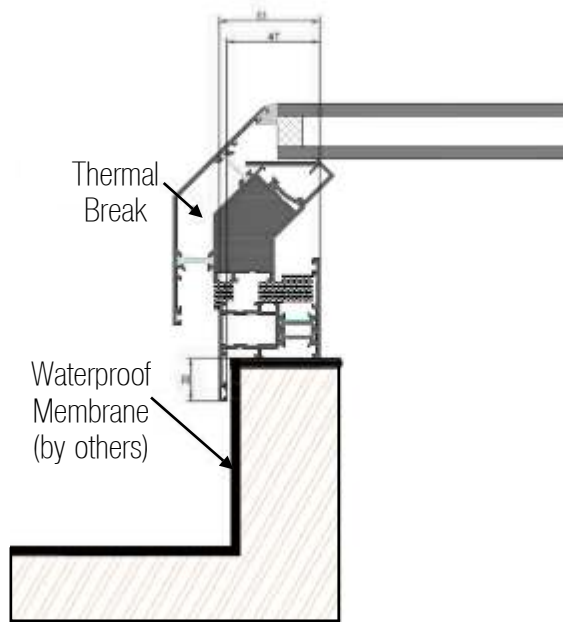
# Alumen Manual and Electric Opening Range



Measure the rooflight to the outside edge of the kerb. Ensure you take into consideration the thickness of the waterproof membrane in any measurement.

## Fitting Instructions

1. Ensure that the timber kerb is tall enough (at least 150 mm above level of roof) and that the waterproof membrane is at least level with the top of the kerb.
2. Put down a heavy bed of silicone on top of the kerb where the rooflight will sit.
3. Place the rooflight down on the bed of silicone.
4. Once you are happy with the position of the rooflight, fit it in place with the screws provided. The screws locate into the pre drilled holes. Before putting in the screws, dip them into silicone so they seal.







# Come and visit our showroom

Unit 13 Henson Way,  
Telford Way Industrial Estate,

## Give us a call, send us an email

Tel : 01536 737377

Fax : 01536 410800

Info@alumen.co.uk

Kettering,

Northants,

NN16 8PX

## Or visit our website

[www.alumen.co.uk](http://www.alumen.co.uk)



**ALUMEN**  
ARCHITECTURAL ALUMINIUM